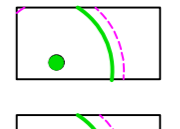
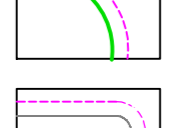
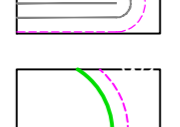

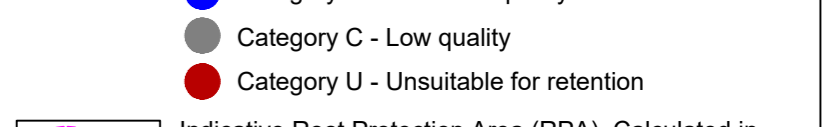



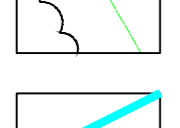


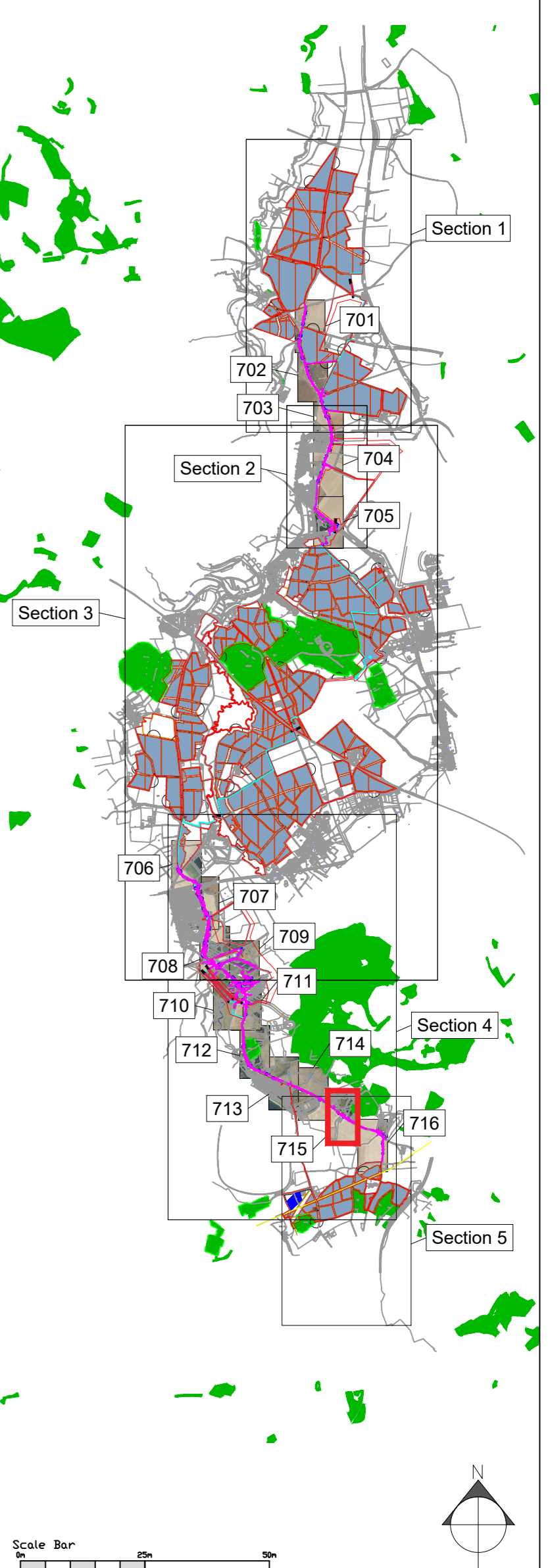
© 2022 RPS Group
Notes
 1. This drawing has been prepared in accordance with the scope of RPS's appointment with its client and is subject to the terms and conditions of that appointment. RPS accepts no liability for any use of this document other than by its client and only for the purposes for which it was prepared and provided.
 2. If received electronically it is the recipient's responsibility to print to correct scale. Only written dimensions should be used.
 3. Where applicable Ordnance Survey (c) Crown Copyright 2022
 All rights reserved. Licence number 0100031673

Key

-  Tree with numbered reference. Canopy spread and coloured BS5837:2012 tree quality category as shown below.
-  Vegetation group with numbered reference. Canopy extents and coloured BS5837:2012 tree quality category as shown below.
-  Hedge with numbered reference. Canopy extents and coloured BS5837:2012 tree quality category as shown below.
-  Woodland with numbered reference. Canopy extents and coloured BS5837:2012 tree quality category as shown below.
-  BS 5837:2012 Tree Quality Categories - Table 1
 ● Category A - High quality
 ● Category B - Moderate quality
 ● Category C - Low quality
 ● Category U - Unsuitable for retention
-  Indicative Root Protection Area (RPA). Calculated in accordance with Section 4.6 - BS5837:2012, using the following average diameters:
 • Small Trees: 250mm
 • Medium Trees: 500mm
 • Large Trees: 750mm
 Some trees were given more specific diameters where diameters were too small/large to fit these groups.
-  Designated Ancient Woodland (as per Natural England ancient woodland inventory, via open data publication)
-  Veteran tree buffer (15m offset) (as per standing advice produced by Forestry England and Natural England)
-  Proposed cable route.

NOTES:

- Refer to RPS Tree Survey Report & Schedule for further details.
- Survey based on a visual inspection from the ground and is not intended as a full arboricultural inspection.
- Plan produced in accordance with recommendations set out in BS 5837:2012 - 'Trees in Relation to design, demolition and construction'.
- Due to the legal protection afforded to breeding birds vegetation removal should not take place during the bird nesting period; generally, although not restricted to, March - August inclusive.
- Survey based upon National Tree Map data purchased by RPS in November, 2022



Rev	Description	By	CB	Date
C	Updated Red Line Boundary	RC	DC	23/10/23
B	Updated Proposed Cable Route	RC	DC	26/07/23
A	Minor Amends	RC	DC	06/12/22



Lakesbury House, Hittingbury Road, Chandlers Ford, Hampshire SO53 5SS
 T: 02380 810 440 E: rpsso@rpsgroup.com

Client **Photovoltaic Development Partners**

Project **Botley West Solar Farm**

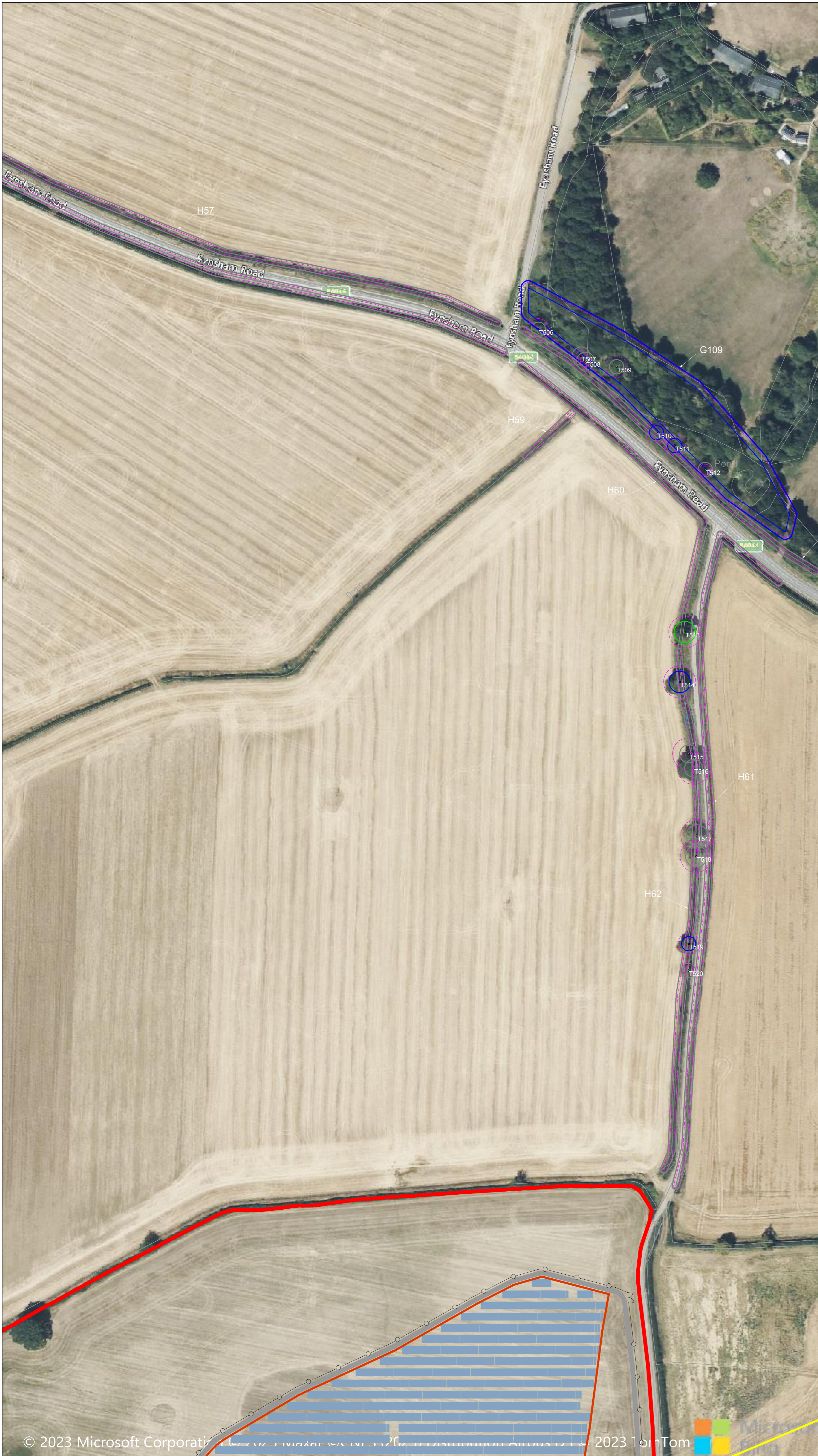
Title **Tree Survey**
 Page 15 of 16

Status **For Information** Drawn By **RC** PM/Checked by **DC**

Job Ref **4631** Scale @ A1 **1:1000** Date Created **November 2022**

RPS Drawing / Figure Number **715** Rev **C**

rpsgroup.com



© 2022 RPS Group

Notes

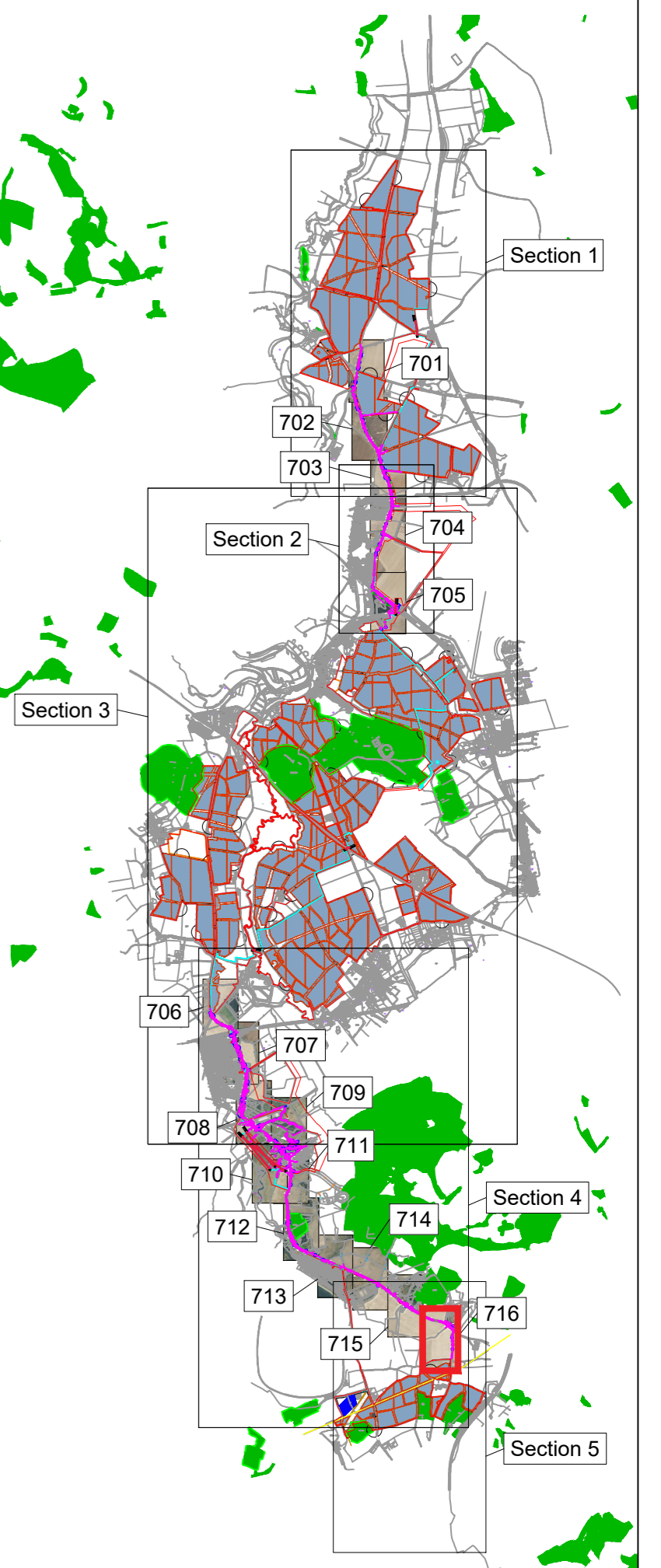
1. This drawing has been prepared in accordance with the scope of RPS's appointment with its client and is subject to the terms and conditions of that appointment. RPS accepts no liability for any use of this document other than by its client and only for the purposes for which it was prepared and provided.
2. If received electronically it is the recipient's responsibility to print to correct scale. Only written dimensions should be used.
3. Where applicable Ordnance Survey (c) Crown Copyright 2022. All rights reserved. Licence number 0100031673

Key

- Tree with numbered reference. Canopy spread and coloured BS5837:2012 tree quality category as shown below.
 - Vegetation group with numbered reference. Canopy extents and coloured BS5837:2012 tree quality category as shown below.
 - Hedge with numbered reference. Canopy extents and coloured BS5837:2012 tree quality category as shown below.
 - Woodland with numbered reference. Canopy extents and coloured BS5837:2012 tree quality category as shown below.
- BS 5837:2012 Tree Quality Categories - Table 1
- Category A - High quality
 - Category B - Moderate quality
 - Category C - Low quality
 - Category U - Unsuitable for retention
- Indicative Root Protection Area (RPA). Calculated in accordance with Section 4.6 - BS5837:2012, using the following average diameters:
 - Small Trees: 250mm
 - Medium Trees: 500mm
 - Large Trees: 750mm
 Some trees were given more specific diameters where diameters were too small/large to fit these groups.
 - Designated Ancient Woodland (as per Natural England ancient woodland inventory, via open data publication)
 - Veteran tree buffer (15m offset) (as per standing advice produced by Forestry England and Natural England)
 - Proposed cable route.

NOTES:

- Refer to RPS Tree Survey Report & Schedule for further details.
- Survey based on a visual inspection from the ground and is not intended as a full arboricultural inspection.
- Plan produced in accordance with recommendations set out in BS 5837:2012 - 'Trees in Relation to design, demolition and construction'.
- Due to the legal protection afforded to breeding birds vegetation removal should not take place during the bird nesting period; generally, although not restricted to, March - August inclusive.
- Survey based upon National Tree Map data purchased by RPS in November, 2022



Scale Bar

C	Updated Red Line Boundary	RC	DC	23/10/23
B	Updated Proposed Cable Route	RC	DC	26/07/23
A	Minor Amendments	RC	DC	06/12/22
Rev	Description	By	CB	Date



Lakesbury House, Hittingbury Road, Chandlers Ford, Hampshire SO53 5SS
T: 02380 810 440 E: rpsso@rpsgroup.com

Client **Photovoltaic Development Partners**

Project **Botley West Solar Farm**

Title **Tree Survey**
Page 16 of 16

Status **For Information** Drawn By **RC** PM/Checked by **DC**

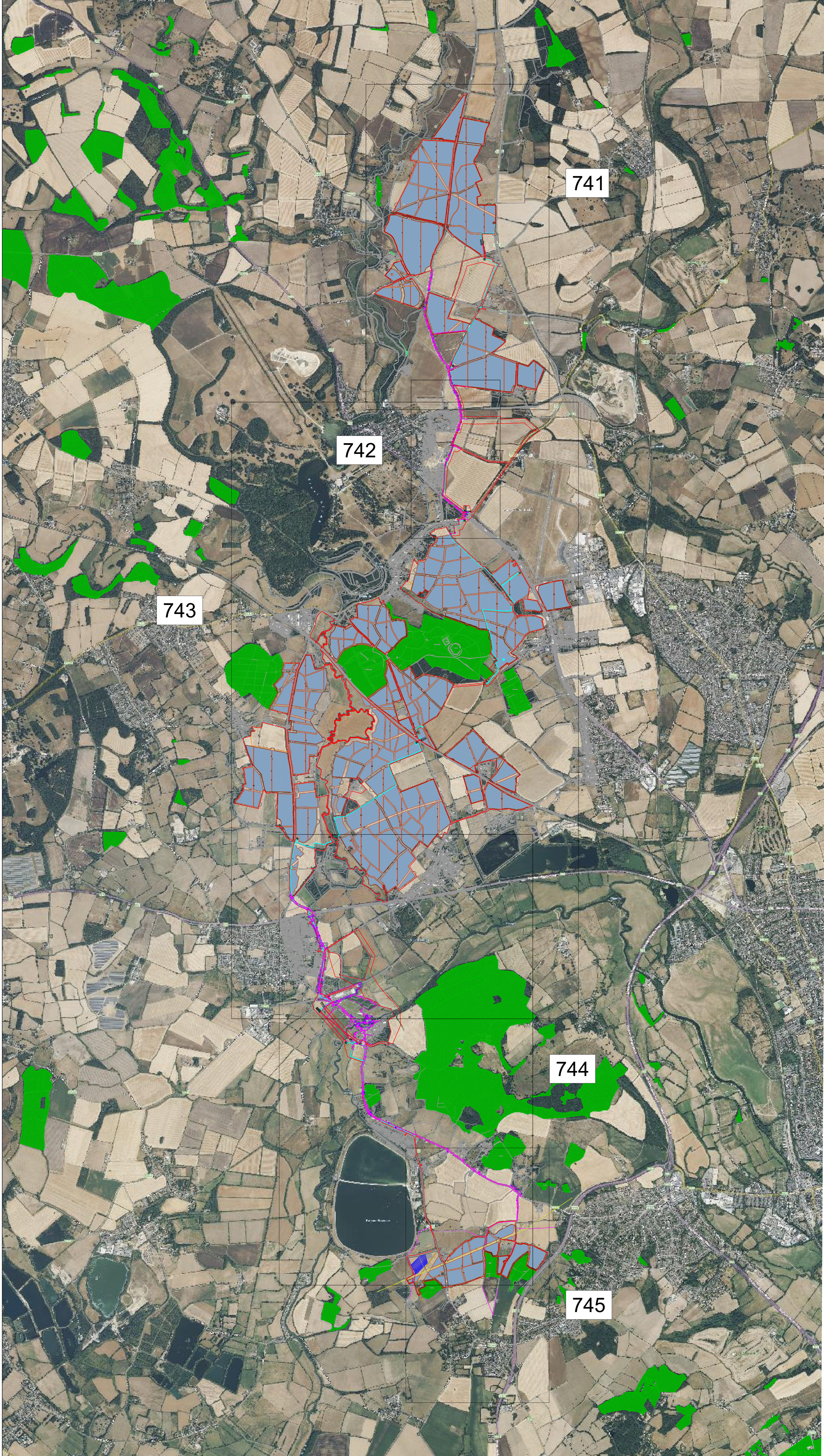
Job Ref **4631** Scale @ A1 **1:1000** Date Created **November 2022**

RPS Drawing / Figure Number **716** Rev **C**

rpsgroup.com

Appendix B

Proposed Site Layout



© 2022 RPS Group
 Notes
 1. This drawing has been prepared in accordance with the scope of RPS's appointment with its client and is subject to the terms and conditions of that appointment. RPS accepts no liability for any use of this document other than by its client and only for the purposes for which it was prepared and provided.
 2. If received electronically it is the recipient's responsibility to print to correct scale. Only written dimensions should be used.
 3. Where applicable Ordnance Survey (c) Crown Copyright 2022
 All rights reserved. Licence number 0100031673

Key

- Tree with numbered reference. Canopy spread and coloured BS5837:2012 tree quality category as shown below.
- Vegetation group with numbered reference. Canopy extents and coloured BS5837:2012 tree quality category as shown below.
- Hedge with numbered reference. Canopy extents and coloured BS5837:2012 tree quality category as shown below.
- Woodland with numbered reference. Canopy extents and coloured BS5837:2012 tree quality category as shown below.

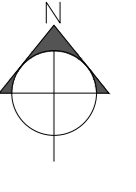
BS 5837:2012 Tree Quality Categories - Table 1

- Category A - High quality
- Category B - Moderate quality
- Category C - Low quality
- Category U - Unsuitable for retention

- Indicative Root Protection Area (RPA). Calculated in accordance with Section 4.6 - BS5837:2012, using the following average diameters:
 - Small Trees: 250mm
 - Medium Trees: 500mm
 - Large Trees: 750mm
 Some trees were given more specific diameters where diameters were too small/large to fit these groups.
- Designated Ancient Woodland (as per Natural England ancient woodland inventory, via open data publication)
- Veteran tree buffer (15m offset) (as per standing advice produced by Forestry England and Natural England)
- Proposed cable route.

NOTES:

- Refer to RPS Tree Survey Report & Schedule for further details.
- Survey based on a visual inspection from the ground and is not intended as a full arboricultural inspection.
- Plan produced in accordance with recommendations set out in BS 5837:2012 - 'Trees in Relation to design, demolition and construction'.
- Due to the legal protection afforded to breeding birds vegetation removal should not take place during the birds nesting period; generally, although not restricted to, March - August inclusive.
- Survey based upon National Tree Map data purchased by RPS in November, 2022



A	Red Line Boundary Change	RC	DC	23/10/2023
Rev	Description	By	CB	Date



Lakesbury House, Hittingbury Road, Chandlers Ford, Hampshire SO53 5SS
 T: 02380 810 440 E: rpsso@rpsgroup.com

Client **Photovolt Development Partners**

Project **Botley West Solar Farm**

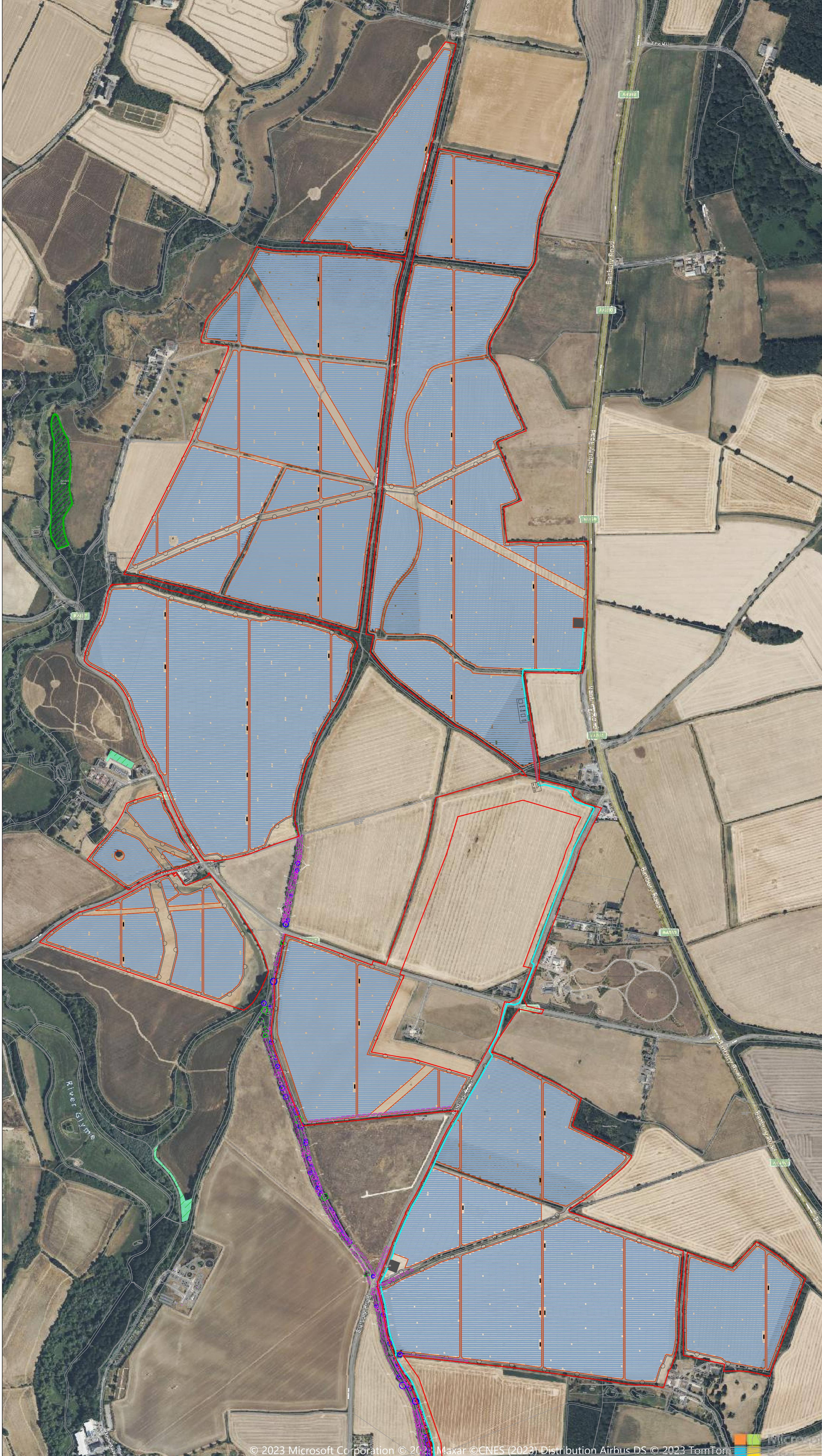
Title **Proposed Site Layout Overview**

Status **For Information** Drawn By **RC** PM/Checked by **DC**

Job Ref **4631** Scale @ A1 **Custom** Date Created **July 2023**

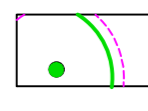
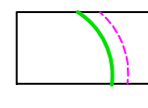
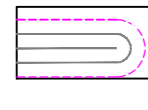
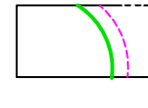




RPS Drawing / Figure Number **740** Rev **A**

rpsgroup.com

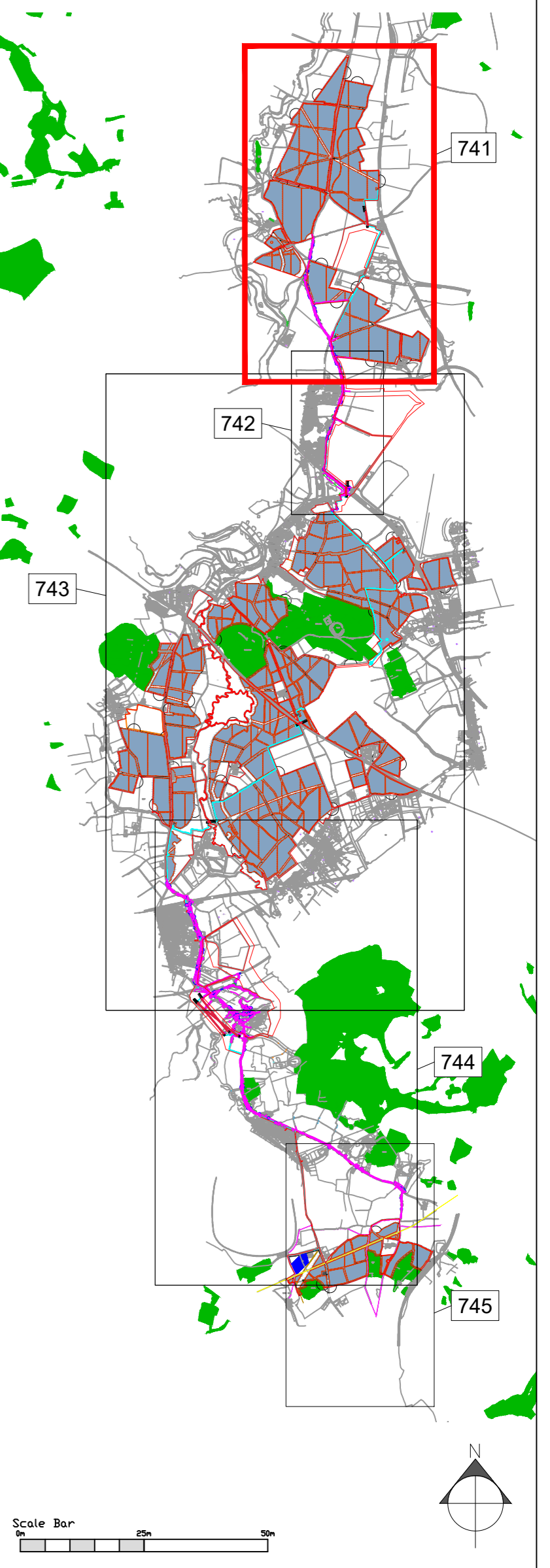


© 2022 RPS Group
 Notes
 1. This drawing has been prepared in accordance with the scope of RPS's appointment with its client and is subject to the terms and conditions of that appointment. RPS accepts no liability for any use of this document other than by its client and only for the purposes for which it was prepared and provided.
 2. If received electronically it is the recipient's responsibility to print to correct scale. Only written dimensions should be used.
 3. Where applicable Ordnance Survey (c) Crown Copyright 2022
 All rights reserved. Licence number 0100031673

Key

-  Tree with numbered reference. Canopy spread and coloured BS5837:2012 tree quality category as shown below.
-  Vegetation group with numbered reference. Canopy extents and coloured BS5837:2012 tree quality category as shown below.
-  Hedge with numbered reference. Canopy extents and coloured BS5837:2012 tree quality category as shown below.
-  Woodland with numbered reference. Canopy extents and coloured BS5837:2012 tree quality category as shown below.
 BS 5837:2012 Tree Quality Categories - Table 1
 ● Category A - High quality
 ● Category B - Moderate quality
 ● Category C - Low quality
 ● Category U - Unsuitable for retention
-  Indicative Root Protection Area (RPA). Calculated in accordance with Section 4.6 - BS5837:2012, using the following average diameters:
 • Small Trees: 250mm
 • Medium Trees: 500mm
 • Large Trees: 750mm
 Some trees were given more specific diameters where diameters were too small/large to fit these groups.
-  Designated Ancient Woodland (as per Natural England ancient woodland inventory, via open data publication)
-  Veteran tree buffer (15m offset) (as per standing advice produced by Forestry England and Natural England)
-  Proposed cable route.

NOTES:
 • Refer to RPS Tree Survey Report & Schedule for further details.
 • Survey based on a visual inspection from the ground and is not intended as a full arboricultural inspection.
 • Plan produced in accordance with recommendations set out in BS 5837:2012 - 'Trees in Relation to design, demolition and construction'.
 • Due to the legal protection afforded to breeding birds vegetation removal should not take place during the bird nesting period; generally, although not restricted to, March - August inclusive.
 • Survey based upon National Tree Map data purchased by RPS in November, 2022



A	Red Line Boundary Change	RC	DC	23/10/2023
Rev	Description	By	CB	Date



Lakesbury House, Hittingbury Road, Chandlers Ford, Hampshire SO53 5SS
 T: 02380 810 440 E: rpsso@rpsgroup.com

Client **Photovoltaic Development Partners**

Project **Botley West Solar Farm**

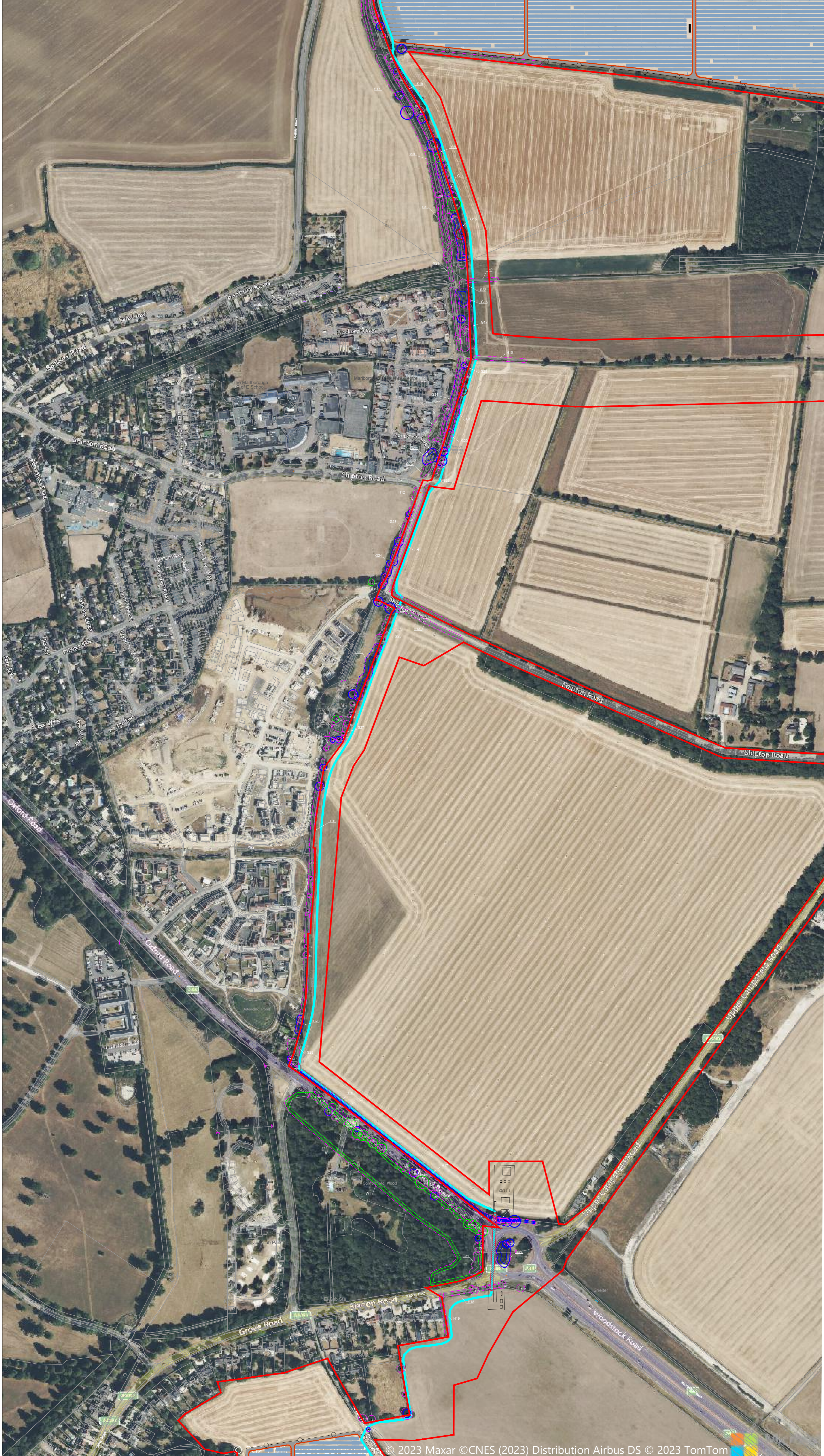
Title **Proposed Site Layout Northern Section Section 1 of 5**

Status **Drawn By** RC **PM/Checked by** DC
For Information

Job Ref **4631** Scale @ A1 **Custom** Date Created **July 2022**

RPS Drawing / Figure Number **741** Rev **A**

rpsgroup.com



© 2022 RPS Group
Notes
 1. This drawing has been prepared in accordance with the scope of RPS's appointment with its client and is subject to the terms and conditions of that appointment. RPS accepts no liability for any use of this document other than by its client and only for the purposes for which it was prepared and provided.
 2. If received electronically it is the recipient's responsibility to print to correct scale. Only written dimensions should be used.
 3. Where applicable Ordnance Survey (c) Crown Copyright 2022
 All rights reserved. Licence number 0100031673

Key

- Tree with numbered reference. Canopy spread and coloured BS5837:2012 tree quality category as shown below.
- Vegetation group with numbered reference. Canopy extents and coloured BS5837:2012 tree quality category as shown below.
- Hedge with numbered reference. Canopy extents and coloured BS5837:2012 tree quality category as shown below.
- Woodland with numbered reference. Canopy extents and coloured BS5837:2012 tree quality category as shown below.

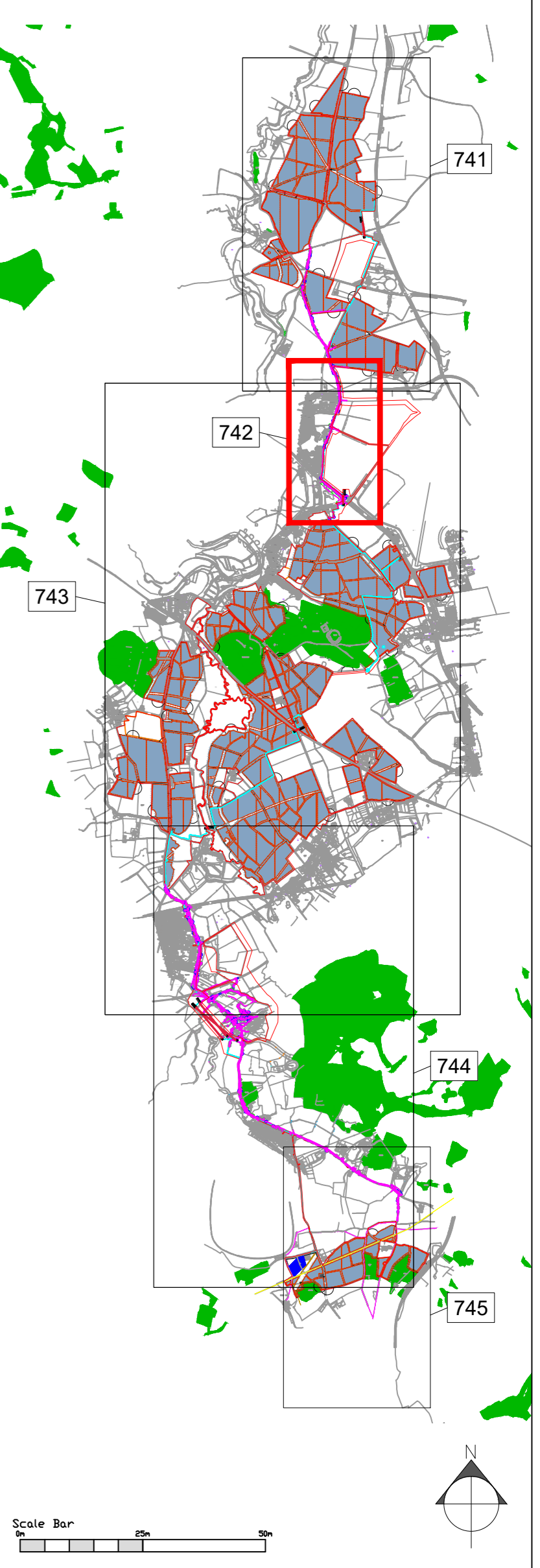
BS 5837:2012 Tree Quality Categories - Table 1

- Category A - High quality
- Category B - Moderate quality
- Category C - Low quality
- Category U - Unsuitable for retention

- Indicative Root Protection Area (RPA). Calculated in accordance with Section 4.6 - BS5837:2012, using the following average diameters:
 - Small Trees: 250mm
 - Medium Trees: 500mm
 - Large Trees: 750mm
 Some trees were given more specific diameters where diameters were too small/large to fit these groups.
- Designated Ancient Woodland (as per Natural England ancient woodland inventory, via open data publication)
- Veteran tree buffer (15m offset) (as per standing advice produced by Forestry England and Natural England)
- Proposed cable route.

NOTES:

- Refer to RPS Tree Survey Report & Schedule for further details.
- Survey based on a visual inspection from the ground and is not intended as a full arboricultural inspection.
- Plan produced in accordance with recommendations set out in BS 5837:2012 - 'Trees in Relation to design, demolition and construction'.
- Due to the legal protection afforded to breeding birds vegetation removal should not take place during the bird nesting period; generally, although not restricted to, March - August inclusive.
- Survey based upon National Tree Map data purchased by RPS in November, 2022



Rev	Description	By	CB	Date
A	Red Line Boundary Change	RC	DC	23/10/2023



Lakesbury House, Hittingbury Road, Chandlers Ford, Hampshire SO53 5SS
 T: 02380 810 440 E: rpsso@rpsgroup.com

Client **Photovoltaic Development Partners**

Project **Botley West Solar Farm**

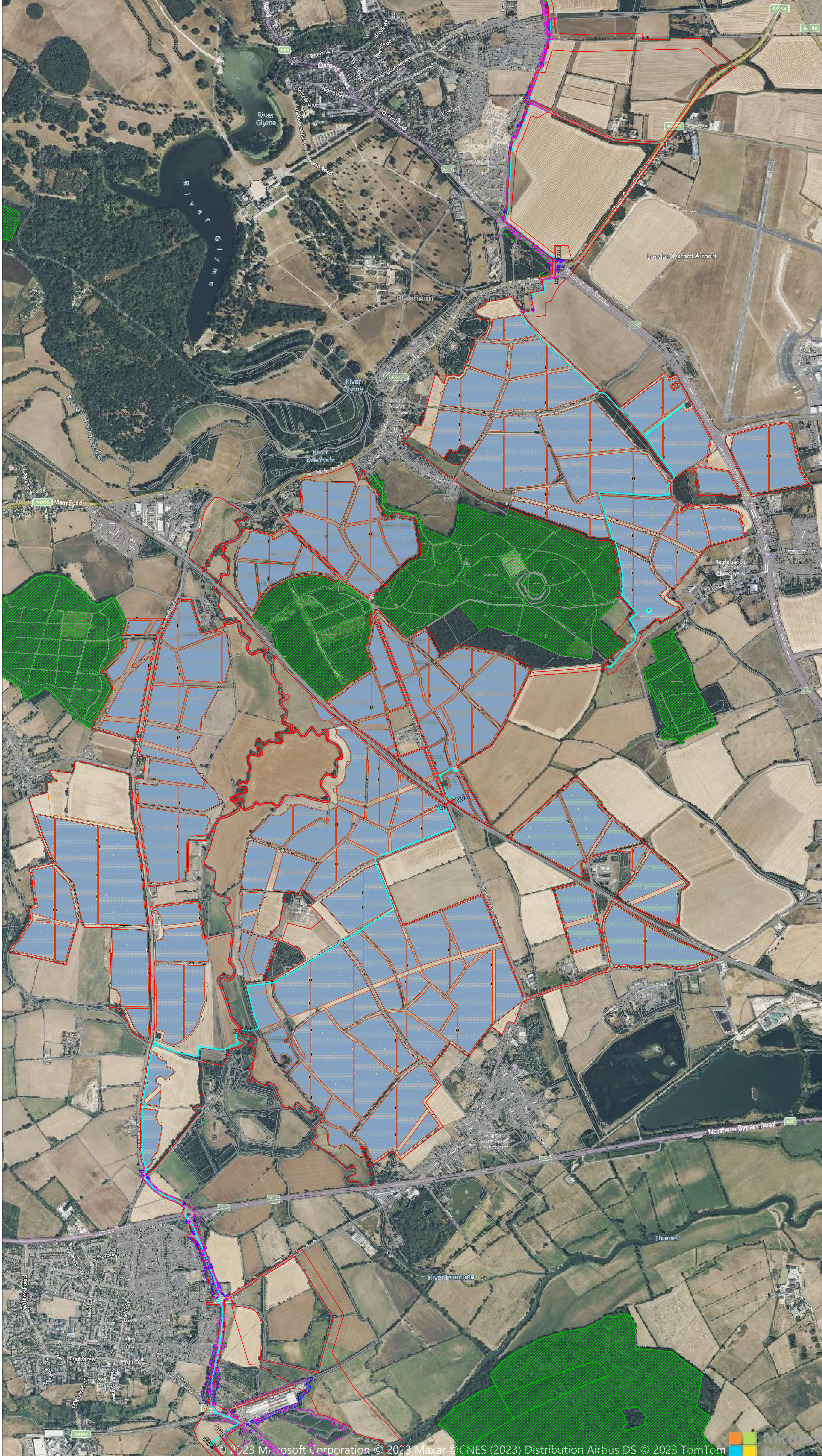
Title **Proposed Site Layout Upper Cable Route Section 2 of 5**

Status **Drawn By** RC **PM/Checked by** DC

Job Ref **4631** Scale @ A1 **Custom** Date Created **July 2022**

RPS Drawing / Figure Number **742** Rev **A**

rpsgroup.com



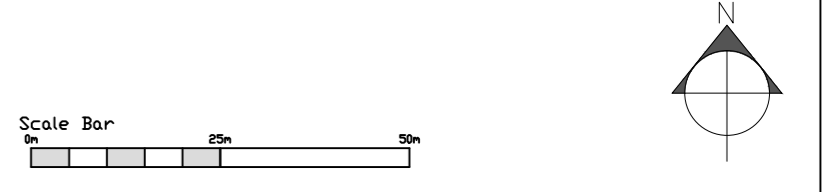
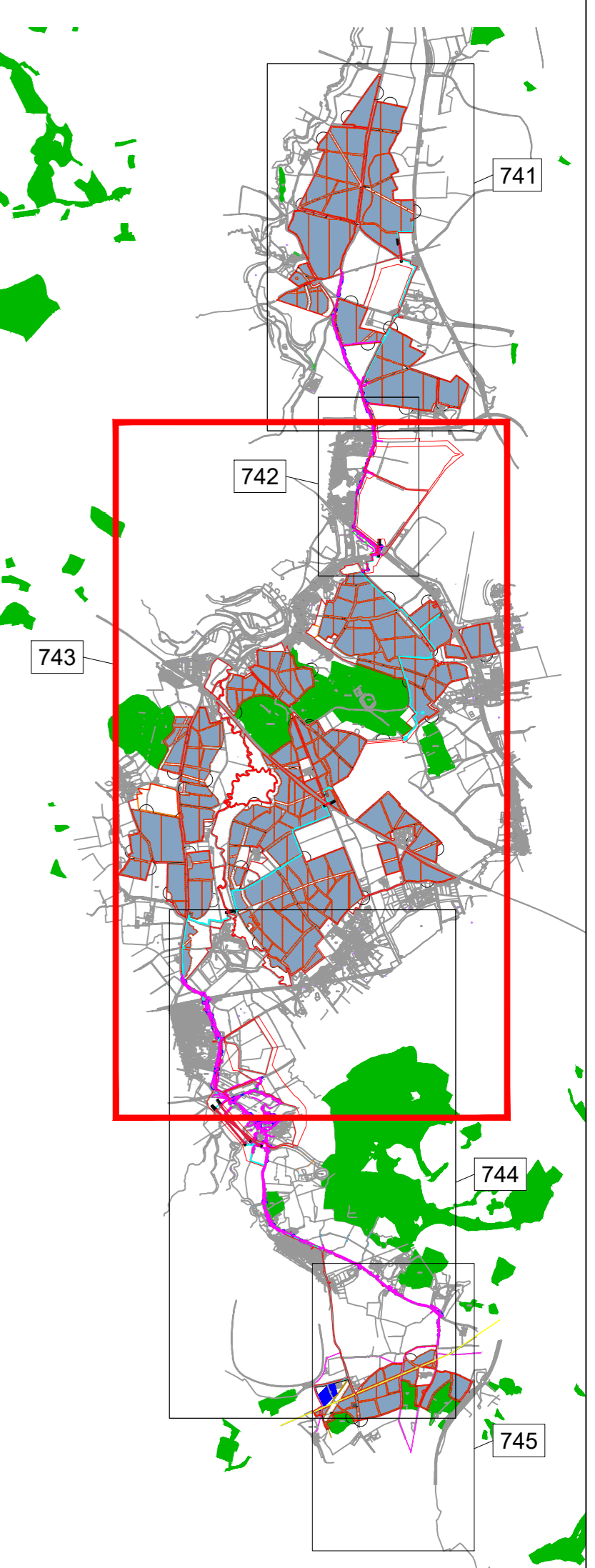
© 2022 RPS Group
Notes
 1. This drawing has been prepared in accordance with the scope of RPS's appointment with its client and is subject to the terms and conditions of that appointment. RPS accepts no liability for any use of this document other than by its client and only for the purposes for which it was prepared and provided.
 2. If received electronically it is the recipient's responsibility to print to correct scale. Only written dimensions should be used.
 3. Where applicable Ordnance Survey (c) Crown Copyright 2022
 All rights reserved. Licence number 0100031673

Key

- Tree with numbered reference. Canopy spread and coloured BS5837:2012 tree quality category as shown below.
- Vegetation group with numbered reference. Canopy extents and coloured BS5837:2012 tree quality category as shown below.
- Hedge with numbered reference. Canopy extents and coloured BS5837:2012 tree quality category as shown below.
- Woodland with numbered reference. Canopy extents and coloured BS5837:2012 tree quality category as shown below.
 BS 5837:2012 Tree Quality Categories - Table 1
 ● Category A - High quality
 ● Category B - Moderate quality
 ● Category C - Low quality
 ● Category U - Unsuitable for retention
- Indicative Root Protection Area (RPA). Calculated in accordance with Section 4.6 - BS5837:2012, using the following average diameters:
 • Small Trees: 250mm
 • Medium Trees: 500mm
 • Large Trees: 750mm
 Some trees were given more specific diameters where diameters were to small/large to fit these groups.
- Designated Ancient Woodland (as per Natural England ancient woodland inventory, via open data publication)
- Veteran tree buffer (15m offset) (as per standing advice produced by Forestry England and Natural England)
- Proposed cable route.

NOTES:

- Refer to RPS Tree Survey Report & Schedule for further details.
- Survey based on a visual inspection from the ground and is not intended as a full arboricultural inspection.
- Plan produced in accordance with recommendations set out in BS 5837:2012 - 'Trees in Relation to design, demolition and construction'.
- Due to the legal protection afforded to breeding birds vegetation removal should not take place during the bird nesting period; generally, although not restricted to, March - August inclusive.
- Survey based upon National Tree Map data purchased by RPS in November, 2022



A	Red Line Boundary Change	RC	DC	23/10/2023
Rev	Description	By	CB	Date



Lakesbury House, Hittingbury Road, Chandlers Ford, Hampshire SO53 5SS
 T: 02380 810 440 E: rpsso@rpsgroup.com

Client **Photovolt Development Partners**

Project **Botley West Solar Farm**

Title **Proposed Site Layout Middle Section Section 3 of 5**

Status **Drawn By** RC **PM/Checked by** DC
For Information

Job Ref **4631** Scale @ A1 **Custom** Date Created **July 2022**

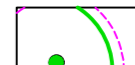

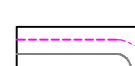

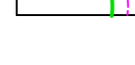



RPS Drawing / Figure Number **743** Rev **A**

rpsgroup.com



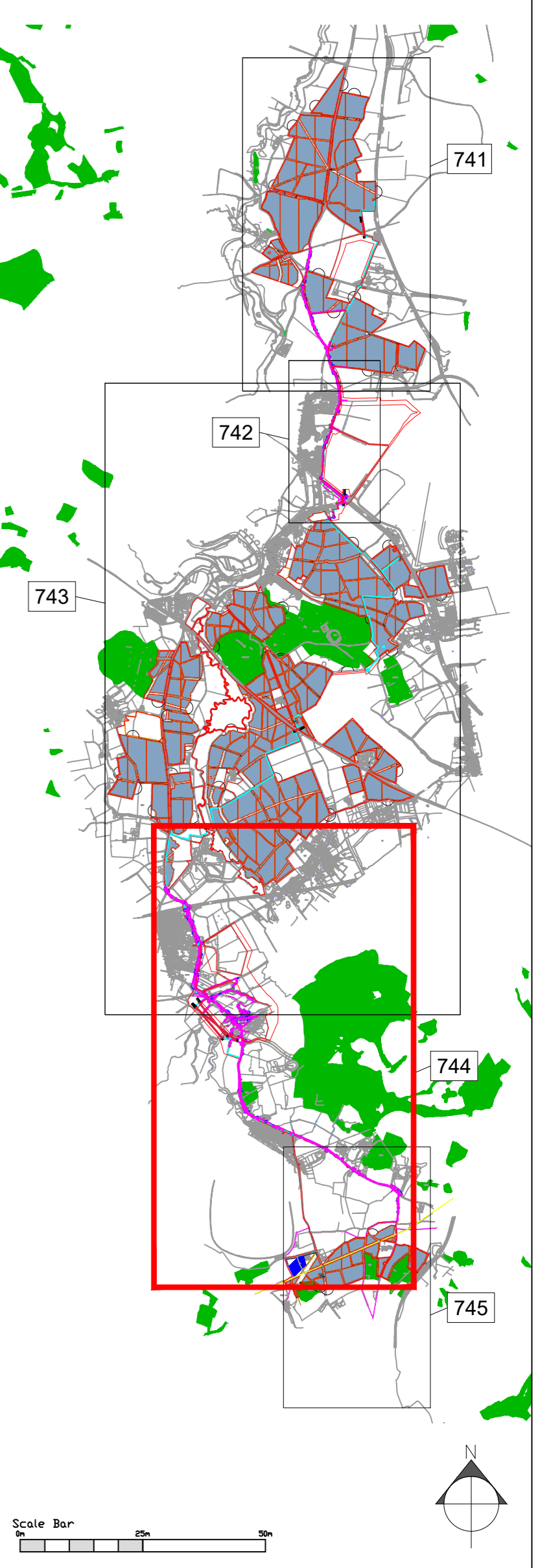
© 2022 RPS Group
Notes
 1. This drawing has been prepared in accordance with the scope of RPS's appointment with its client and is subject to the terms and conditions of that appointment. RPS accepts no liability for any use of this document other than by its client and only for the purposes for which it was prepared and provided.
 2. If received electronically it is the recipient's responsibility to print to correct scale. Only written dimensions should be used.
 3. Where applicable Ordnance Survey (c) Crown Copyright 2022
 All rights reserved. Licence number 0100031673

Key

-  Tree with numbered reference. Canopy spread and coloured BS5837:2012 tree quality category as shown below.
-  Vegetation group with numbered reference. Canopy extents and coloured BS5837:2012 tree quality category as shown below.
-  Hedge with numbered reference. Canopy extents and coloured BS5837:2012 tree quality category as shown below.
-  Woodland with numbered reference. Canopy extents and coloured BS5837:2012 tree quality category as shown below.
 BS 5837:2012 Tree Quality Categories - Table 1
 ● Category A - High quality
 ● Category B - Moderate quality
 ● Category C - Low quality
 ● Category U - Unsuitable for retention
-  Indicative Root Protection Area (RPA). Calculated in accordance with Section 4.6 - BS5837:2012, using the following average diameters:
 • Small Trees: 250mm
 • Medium Trees: 500mm
 • Large Trees: 750mm
 Some trees were given more specific diameters where diameters were too small/large to fit these groups.
-  Designated Ancient Woodland (as per Natural England ancient woodland inventory, via open data publication)
-  Veteran tree buffer (15m offset) (as per standing advice produced by Forestry England and Natural England)
-  Proposed cable route.

NOTES:

- Refer to RPS Tree Survey Report & Schedule for further details.
- Survey based on a visual inspection from the ground and is not intended as a full arboricultural inspection.
- Plan produced in accordance with recommendations set out in BS 5837:2012 - 'Trees in Relation to design, demolition and construction'.
- Due to the legal protection afforded to breeding birds vegetation removal should not take place during the bird nesting period; generally, although not restricted to, March - August inclusive.
- Survey based upon National Tree Map data purchased by RPS in November, 2022



Rev	Description	RC	DC	23/10/2023
A	Red Line Boundary Change			
		By	CB	Date



Lakesbury House, Hittingbury Road, Chandlers Ford, Hampshire SO53 5SS
 T: 02380 810 440 E: rpsso@rpsgroup.com

Client **Photovoltaic Development Partners**

Project **Botley West Solar Farm**

Title **Proposed Site Layout Lower Cable Route Section 4 of 5**

Status **For Information** Drawn By **RC** PM/Checked by **DC**

Job Ref **4631** Scale @ A1 **Custom** Date Created **July 2022**

RPS Drawing / Figure Number **744** Rev **A**

rpsgroup.com